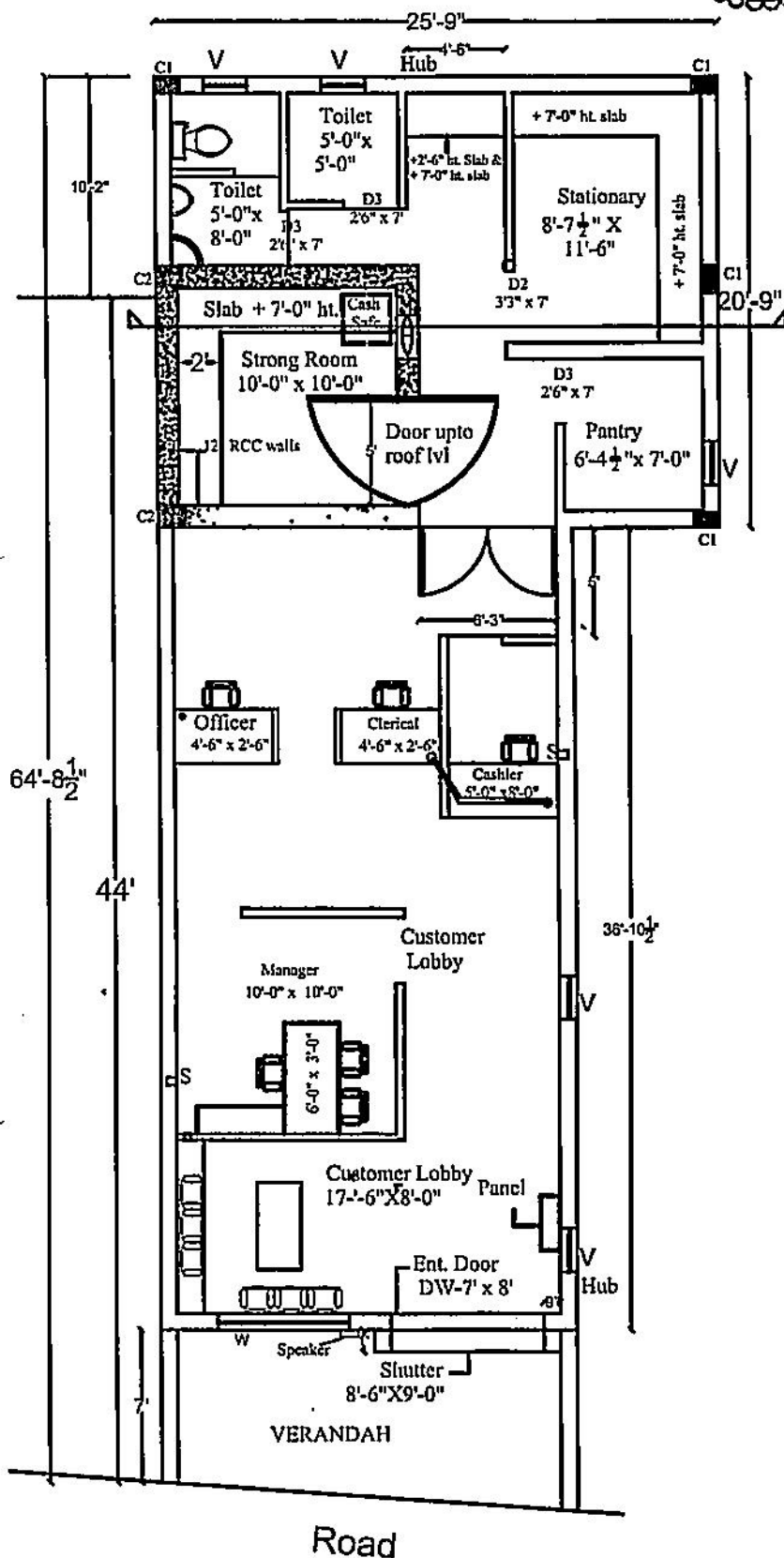




**PUNJAB GRAMIN BANK,
KAHPUR KHUHI, DISTT.
ROPAR.**

A



Joinery of Detail

- D/W - 7'-0" X 8'-0"
- W = 6'-0" X 4'-0" SL. - 3'-0"
- Ap D - 7'-0" X 8'-0"
- D - 3'-0" X 7'-0"
- D2 - 3'-3" X 7'-0"
- D3 - 2'-6" X 7'-0"
- R.S- 8'-6"-0" X 9'-0"
- V - 3'-0" X 2'-0" SL.- 5'-0"

Column of Detail

- C1 = 15" X 9"
- C2 = 15" X 12"

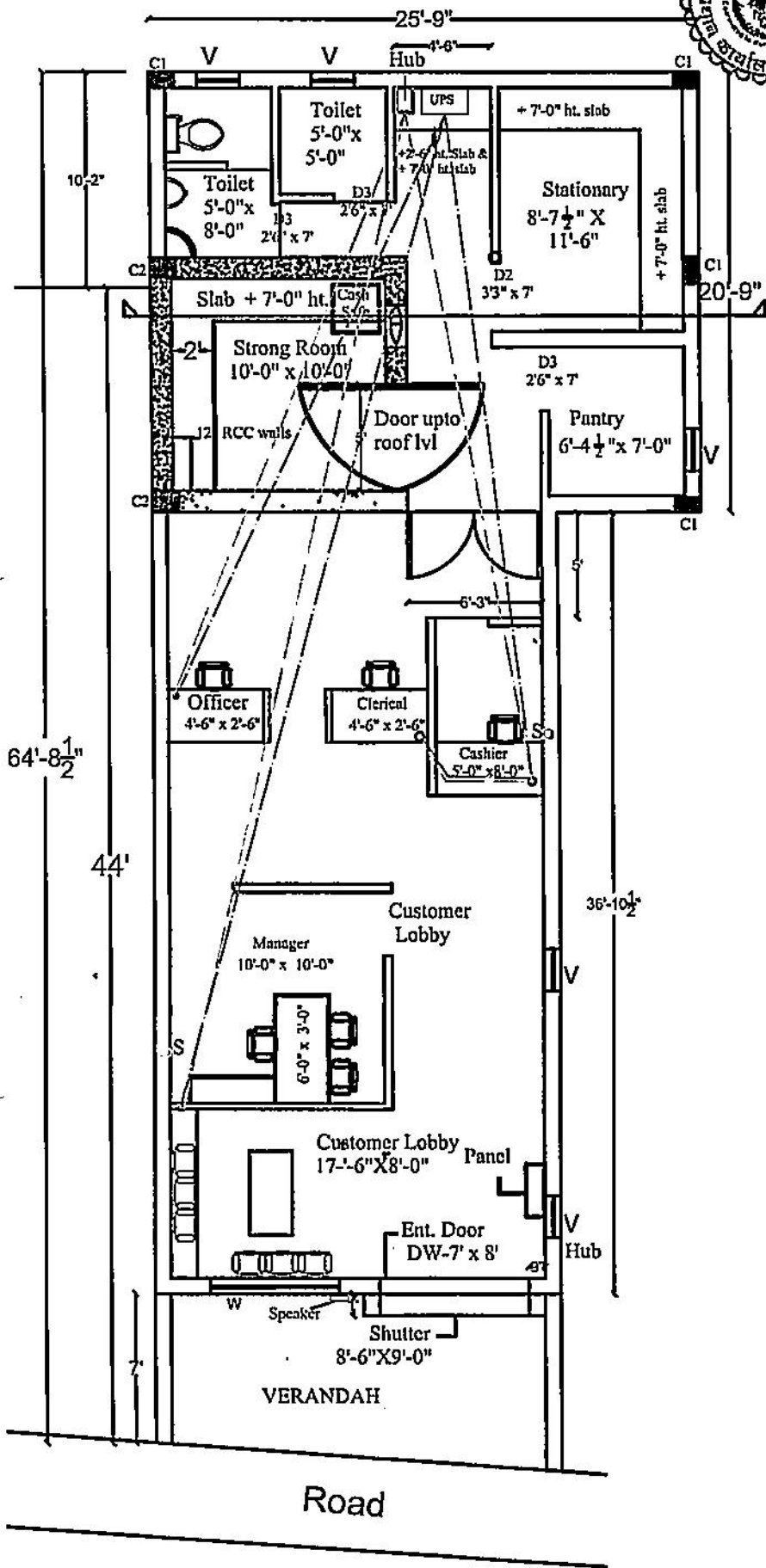
TOTAL EXISTING COVD. AREA	- 850 SQFT.
AREA TO BE LEFT FRONT OPEN	- 146 SQFT.
NET AREA	- 704 SQFT.
ADDITIONAL AREA	- 535 SQFT.
TOTAL COVERED AREA	- 1239 SQFT.
CARPET AREA WITHOUT TOILET & PANTRY	- 960 SQFT

**B.K.SINGHAL
4 COOL ROAD,
JALANDHAR
98153-29429**



**PUNJAB GRAMIN BANK,
KARNPUR KHUHI, DISTT.
ROPAR.**

B



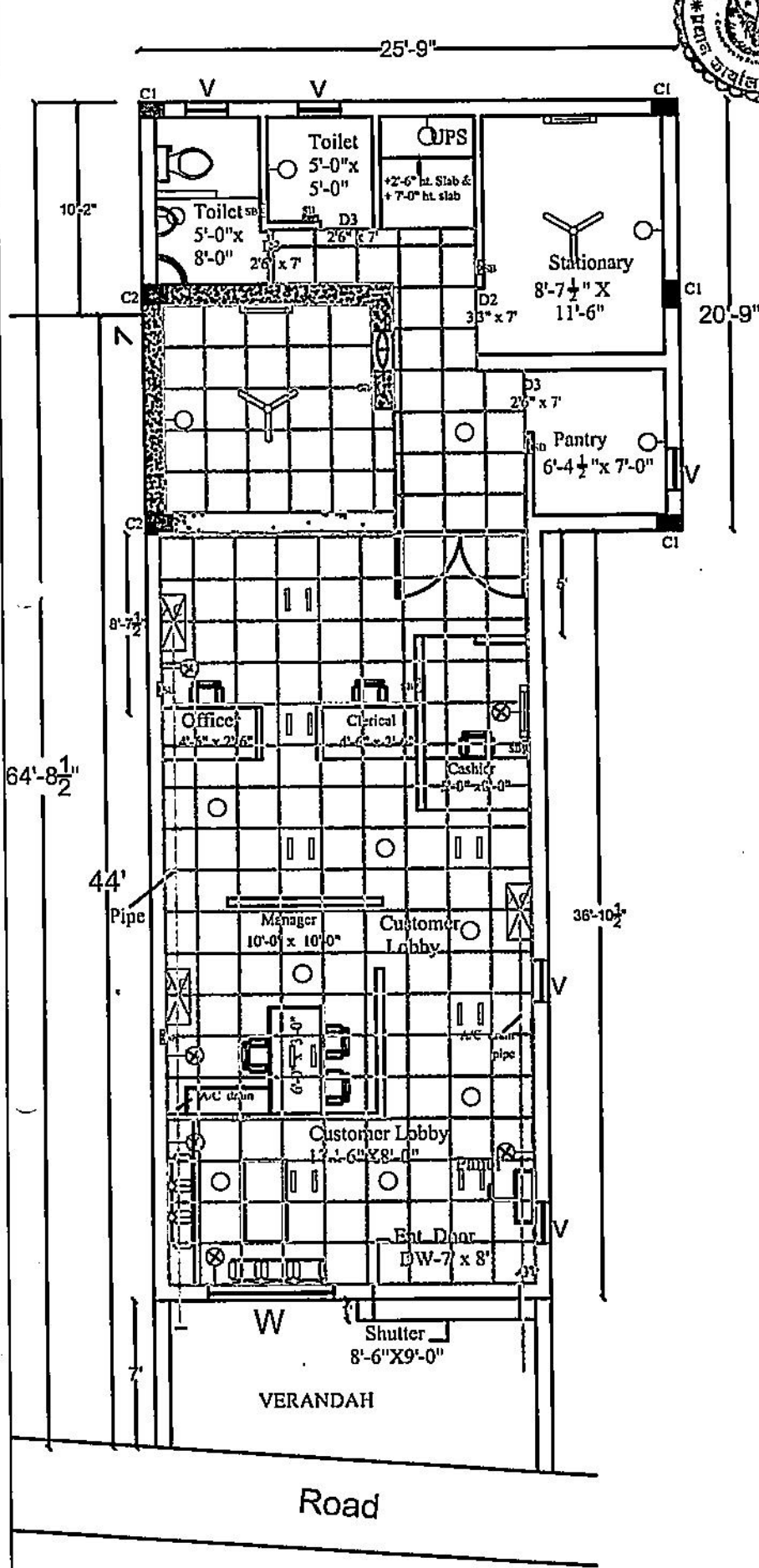
**B.K.SINGHAL
4 COOL ROAD,
JALANDHAR
98153-29429**



**PUNJAB GRAMIN BANK,
KAHNPUR KHUHL, DISTT.
ROPAR.**

A

ELECTRICAL PLAN



**B.K.SINGHAL
4 COOL ROAD,
JALANDHAR
98153-29429**